

Bespoke *products*



SEMPRE
IN & OUTDOOR LIVING

*“Creators of
Atmospheres”*

Our philosophy: *Creators of Atmospheres*



Foreword

Welcome to Sempre's bespoke products catalogue, where creativity meets craftsmanship. This catalogue is designed for those who seek truly unique and personalized solutions that go beyond the ordinary.

Within these pages, you'll discover a carefully curated selection of materials, textures and finishes. Each option has been thoughtfully chosen to offer you the flexibility to create distinctive, handcrafted pieces that reflect your individual style and vision.

Our bespoke offerings allow you to tailor our designs to your exact preferences, while still maintaining the integrity of Sempre's renowned design framework. Whether you're looking to make a subtle statement or create an entirely custom atmosphere, this catalogue provides the tools and inspiration to bring your ideas to life.

Explore our bespoke options and let us collaborate with you to craft something truly exceptional—something that not only meets your expectations but exceeds them, adding a unique touch to your projects.

At Sempre, we understand that true luxury lies in the details.

Our bespoke products offer the opportunity to personalize our designs or to produce your design to perfectly align with your vision. Whether you're seeking a unique material, texture or finish, our catalogue presents a wide range of options that can be customized to your specifications.

Each bespoke piece is a reflection of our commitment to craftsmanship and attention to detail. We invite you to explore the various materials and finishes available, knowing that each selection can be tailored to create something truly unique.

Minimum Order Quantities:

Please note that for bespoke products, minimum ordering quantities are applicable. These quantities can range from 1 (tables) to 1,000 (tableware), depending on the specific product. We will provide detailed information on the applicable minimums during the customization process.

Production feasibility:

While we strive to meet all customization requests, please be aware that production feasibility and capabilities may vary depending on the specific materials, products and designs selected. We will work closely with you to ensure that your bespoke products meet our high standards of quality and craftsmanship.



Creating your bespoke product



Any furniture model can be customized to meet your unique needs. From bar tables, coffee tables, side tables, and console tables to larger furniture pieces like dining tables, chairs, benches, and shelving, we offer endless possibilities for personalization. Every piece of furniture is handcrafted and can be tailored with our wide range of materials, textures, finishes, and designs to create something truly one-of-a-kind.

While we specialize in crafting bespoke furniture, tables remain at the heart of our expertise. Their versatility and central role in any space make them the perfect canvas for creativity. Whether you're looking for a statement coffee table, a sleek console table, or a grand dining table, we pride ourselves on transforming your ideas into reality.

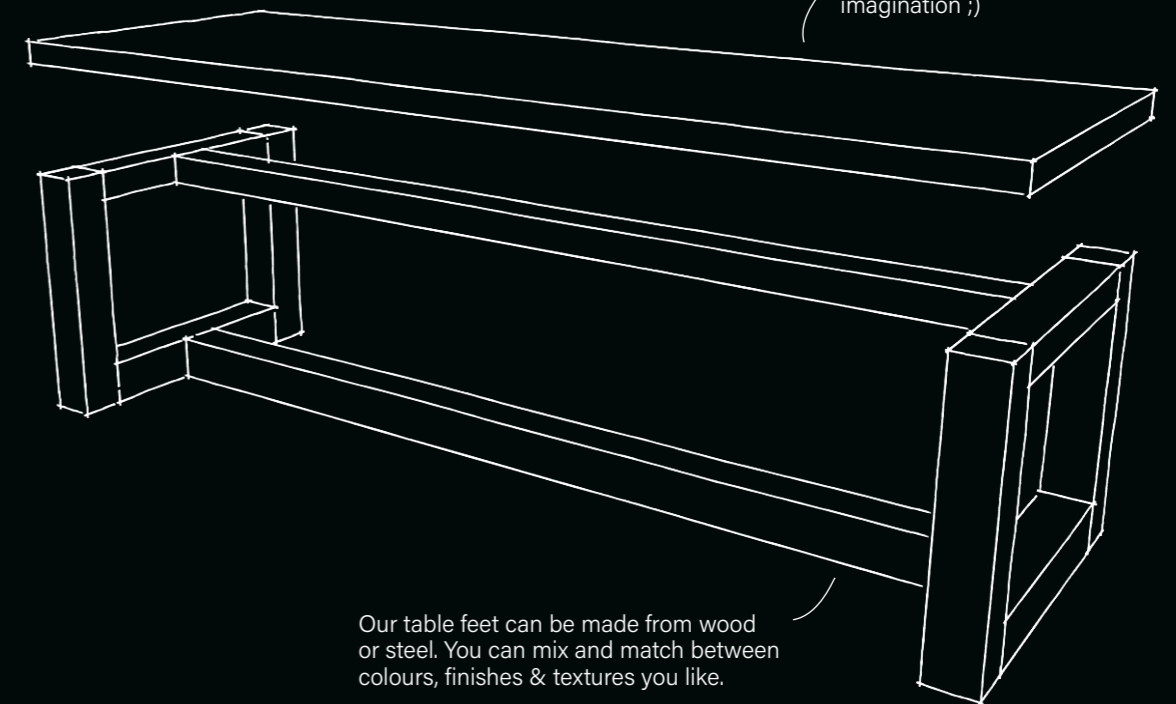
Our bespoke offerings include a variety of design options, such as the "Slim" range. These designs feature a sleeker and more lightweight aesthetic, achieved by using fewer raw materials while maintaining the exceptional craftsmanship and quality Sempre is known for. The "Slim" range provides a lower-cost alternative to our original tables without compromising elegance or functionality.

Do you have a specific idea or inspiration? Share it with us, and we'll bring it to life! With our craftsmanship and expertise, the sky is the limit*.

Tables may be our most bespoke product, but our dedication to customization and quality extends to every piece of furniture we create. Discover the endless possibilities to design furniture that reflects your individual style and needs.

** Subject to production and technical feasibility, as our team carefully evaluates each design to ensure it meets our quality, durability and craftsmanship standards.*

Wood, stone or even steel table tops? The possibilities are endless! As is your imagination ;)



Our table feet can be made from wood or steel. You can mix and match between colours, finishes & textures you like.

Step by step guide

1

Sempre Original or Slim



The authentic rugged look and feel. More raw materials are used.



Lighter, but still the same design non the less. Uses fewer raw materials.

2

Select your shape and size



Shop our vast ranging amount of table designs.



Send us your drawing. We will make your dream come true!

3

Material | texture | finish



Choose your materials for bespoke furniture: wood, stone, or steel. Mix & Match!



Want to use a texture on the legs or even the top? Wood allows for textured finishes—It's all possible!



Finishes can be applied to both stone and wood to achieve a truly bespoke character.

4

Protection



Natural protection. You embrace the natural process of wood.



Add a protection layer to your furniture.

5

Create



We start working on your unique piece of furniture.

6

Enjoy!



Time to get together with the family around the furniture and enjoy life!



Choose from our existing models...

Tables

Andreas	Anabel	Diana
Elias	Fred rectangular	Fred oval
Fred square	Ghidoni	Gunter rectangular
Gunter round	Gunter round	Hans

Isabelle	Jonas	Kyle round
Kyle square	Liesje	Robusta
Santi	Shuki oval	Shuki rectangular
Shuki round	X table	Zeno

Consoles

Ben



Branch table



Dimi



Elias



Gunter



Jessica Art Gallery



Jimmy



Tarzan



TV console



Coffee tables

Abaca



Barack



Columbus



George



George on wheels



Georgy



Square



Sumatra



Tach



Cabinets

Alais Marotte



Alexos



Ava Edam



Brasil



Jos



Primitif



Sofas

Mushu single



Mushu double



Mushu triple



Square single



Square double



Square triple



Tach single



Tach double



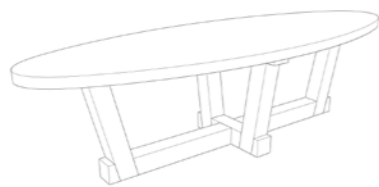
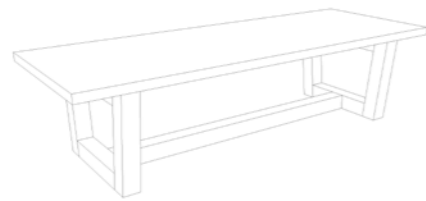
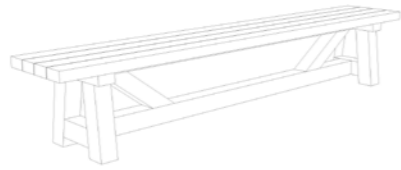
Tach triple



Tomas



... or send us your drawing



Materials, textures & finishes

Materials



Scan the code for more information

The materials, textures and finishes we choose are the essence of the story each product tells.

Every material carries with it a unique history, a distinct texture, and a natural beauty that we carefully enhance through our finishes.

These finishes are the final touch that brings out the character of each piece, highlighting its strengths and revealing its hidden details.

Our approach to finishes is rooted in the belief that the surface of a material should reflect both its journey and its potential. Whether we leave the stone in its natural state to celebrate its raw elegance or apply a meticulous finish that brings out its deeper tones and textures, the result is always a product that feels authentic, timeless, and refined.

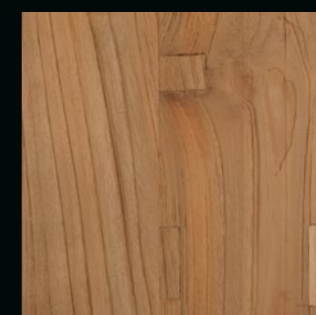
Materials

Wood

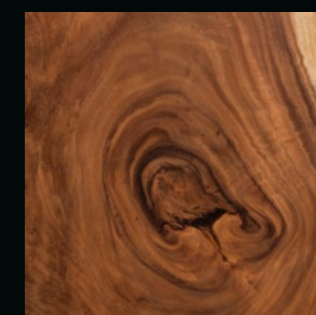
Sempre's products are handmade with reclaimed wood and manufactured using ancient methods. The solid wood used for our products can be up to 200 years old. Purchasing a wooden piece means accepting a crack or gap here and there, an irregular surface or wood structure, and the fact that the material lives. As a natural result of external influences, each piece will age differently and develop its unique character over time. When left outdoors the wood gradually changes color due to sunshine and rain and will develop a grey patina.



Oak reclaimed



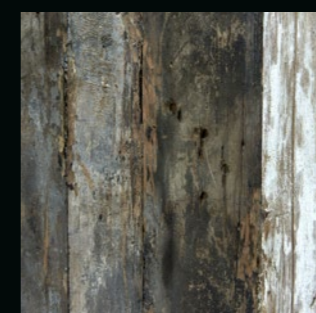
Teak reclaimed



Suar



Oak original



Teak original



Kivits

Stone

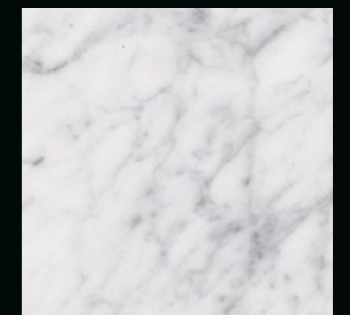
Sempre works with natural stones mined in Europe. Chemical products or colorings are banned, and the natural elements are celebrated even more. Fossil prints remind us that these stones have many stories to tell.



Bluestone -B



Sinai Pearl -SIP



Carrara marble -C



Granite black -GB



Autumn green -AG



Neo -N



Gautier -GA



Travertine -TA

Steel

We love the rugged and rustic look of steel. A rewarding material that can be bent and welded, but above all, is extremely strong and indestructible! The different textures and finishes are style statements in itself and fit the Sempre vibe perfectly.



Aluminium -ALU



Stainless steel -SS



Construction steel -CS



Corten -CO



Zincor -ZI



Scrap metal -SM



Plumb -PB

Textures

Wood

Once the type of wood has been determined it's time for the next step, choosing your preferred texture.

There are different textures to choose from, hand-sculpted by master carpenters to machine-carved providing a more modern look.

Our textures can be applied to any type of wood.



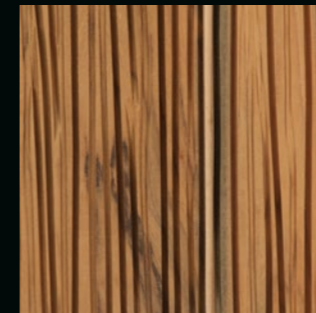
Natural

A subtle rustic treatment obtained by extra brushing is our standard texture.



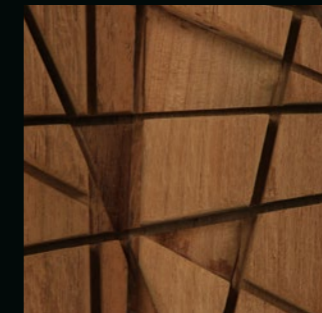
Chainsaw cut -CSC

The Chainsaw Cut finish offers a rugged, rustic aesthetic, showcasing the raw, unrefined marks left by the chainsaw. This finish emphasizes the wood's natural texture, giving each piece a bold, industrial look that celebrates its untamed origins.



Tiré / Linié -T

The Linié finish features clean, linear markings that add a modern, geometric, yet playful element to the wood. This finish is perfect for those seeking a contemporary design.



Criss cross -CC

Bold and distinctive, perfect for those who appreciate the artistry of a unique chainsaw technique.



Patroné -PAT

Special Sempre design, chiseled by hand!



Cadré -CAD

Squared out and made with a special technique we developed throughout the years.



Sculpt -SCU

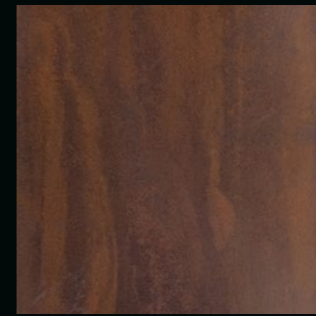
Carefully carved textures and contours that enhance the natural beauty of the wood, adding a touch of artistry and refinement to every piece.



Cascade -CAS

With a free hand sculpted in one line from top to bottom.

Steel



Rustic rust -RR



Rustic rust hammered -RRH



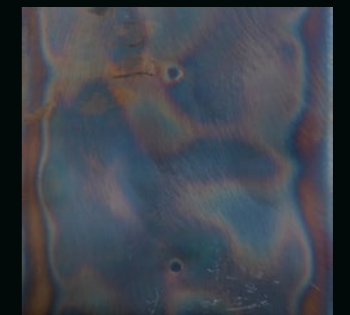
Rustic rust sb -RRSB



Rustic steel -RS



Rustic steel hammered -RSH



Blueing -BLU

Finishes

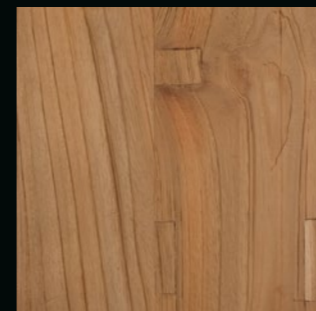
Wood

The finishes we apply are more than protection — they define the soul of each piece. Our Fumé finish brings a sophisticated smoked effect, deepening the wood with elegant grey undertones. The Natural finish celebrates the wood's original warmth and authenticity, while the Grey finish lends a timeless, weathered look reminiscent of sun-washed driftwood.

Every finish is hand-applied by our artisans, turning each creation into a unique work of art that enriches your space with character and atmosphere.

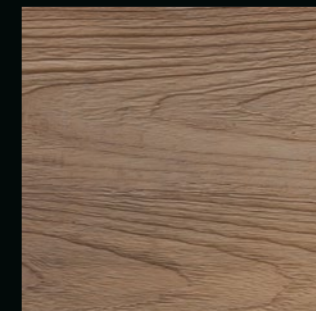
Please note that the **Fumé** and **Grey** finishes are **less suitable for outdoor use**. Exposure to sunlight and weather may cause fading. To maintain the authentic look, we recommend **periodic reapplication** with the appropriate finish treatment. The **Natural finish** is more resistant outdoors but should still be maintained with regular cleaning and occasional oiling.

Finishes



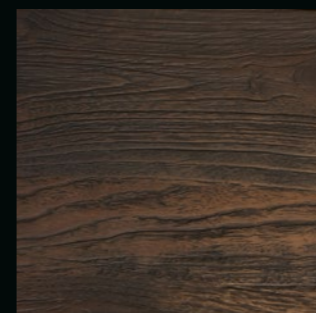
Natural

A natural finish keeps the original color of the wood. Teak remains untreated, oak is treated for this finish.



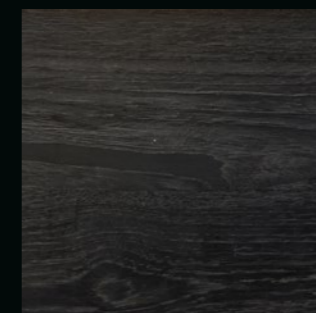
Grey

An aging whitewashed effect gives your furniture a rustic atmosphere.



Patiné

Patiné furniture gets a darker, warmer color.



Fumé

A smoked look that blackens the wood, with a grey undertone. Good to know: this effect is more intense with a rough wood texture.

Stone

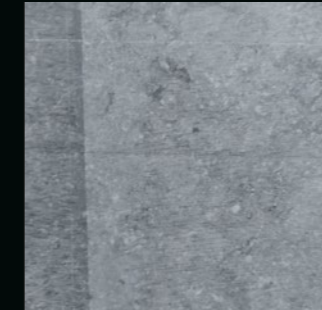
Top finishes

Most of our stone surfaces can be processed with a top finish. This finish largely determines the final look of the product.



Natural

No additional finishing.



Saw cut

-SC

A ragged look naturally obtained by saw cuts.



Erosé

-ER

A corroded finish.



Antique

-A

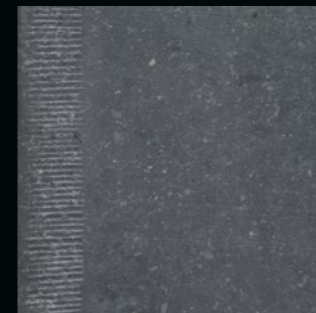
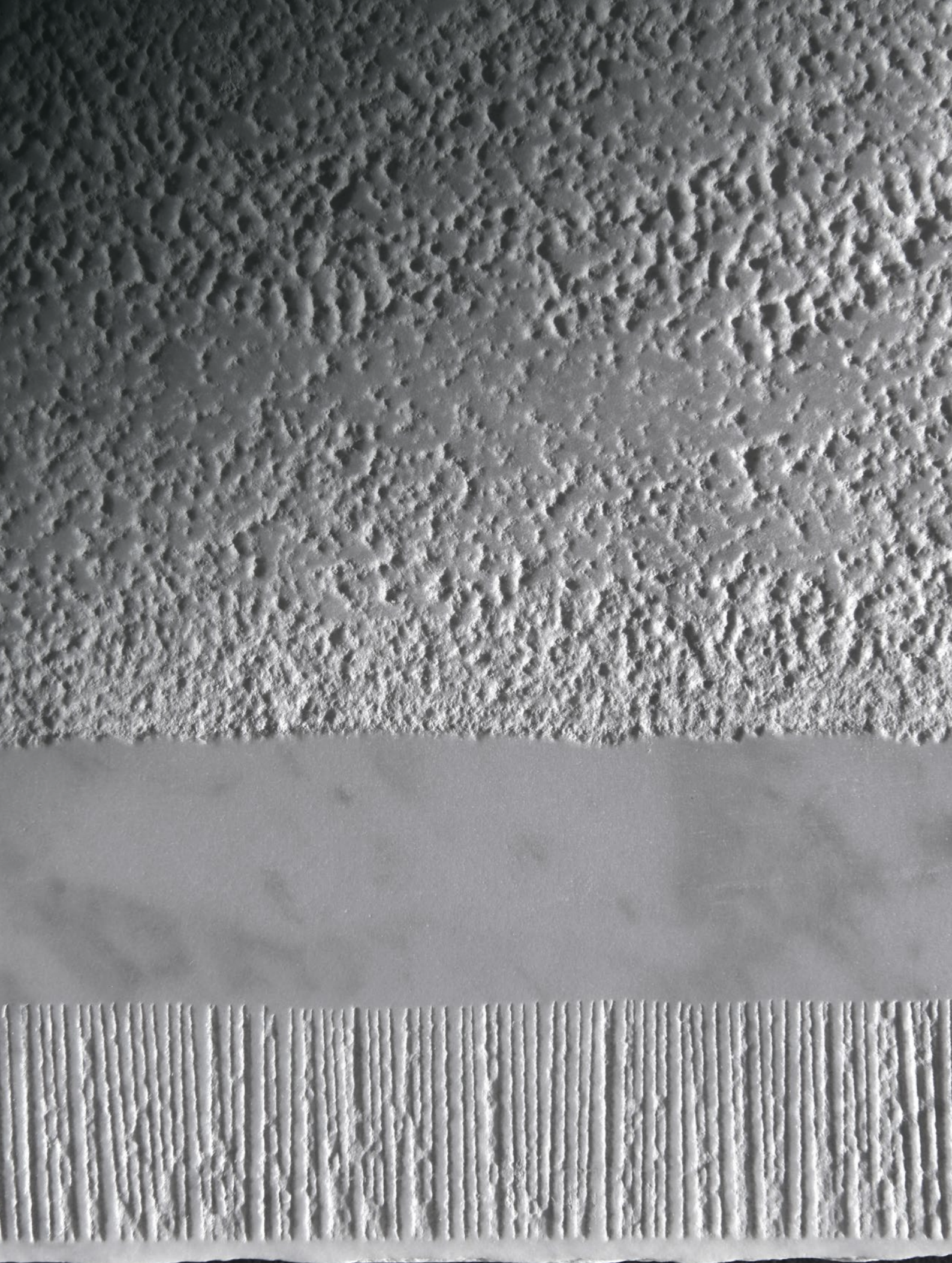
An antique effect obtained by torching the surface of the stone.



Bouchardé

-B

Hammered tiny wells.



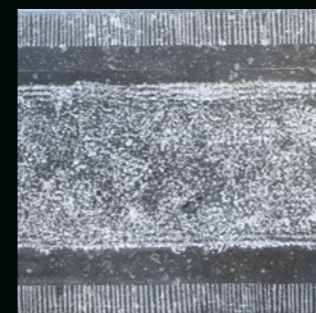
Korinthia -K
Bluestone rim, chiseled by hand.



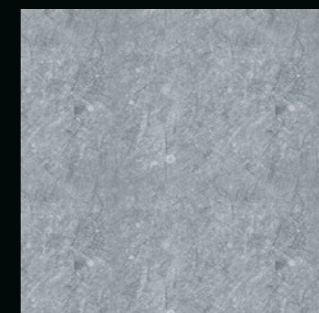
Tiré -T
Fine lines create a subtle effect.



Leathered -L
This color enhancement can be combined with the other finishes.



Ferrara -FE
Classic treatment of Belgian bluestone with rim.



Vintage -V
A vintage effect by manual manipulation.



Fumé -F
This color enhancement can be combined with the other finishes.

Edge finishes

Do you prefer a classic or rather a natural finish?
The choice is yours!
You can pick from six unique edge finishes.



Tiré -T

Rounded edge with natural shape and pulled stripes.



Rocky -R

Irregular edge with level difference.



Korinthia -K

Engraved lines for a classic edge.



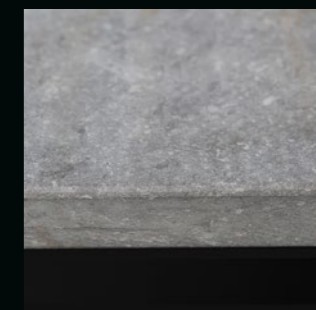
Puré -P

The pure forms of the rock.



Pebbles -PE

Soft and naturally rounded, like pebbles in a river.



Saw cut -SC

Straight from the saw machine, no extra finishing

Protection

We are convinced that the natural aging process should be celebrated. That is why our products are not protected by default.

If you do not want your furniture to endure too much, you have a few options to choose from.

Wood



Natural

Natural protection
indoor/outdoor use

You can choose not to have a final protective layer on your furniture. You embrace the natural process of wood and will celebrate each stain.



Liquid & stain protector

Wood shield protector
indoor/outdoor use

This spray protects natural wooden surfaces from stains and water damage. Spray the surface until slightly wet, and repeat this every six months.



Wax

Turpentine wax 375 ml
indoor use

Wax acts as a sacrificial layer that can be easily and inexpensively replaced. Made from natural ingredients, they produce a soft, satin sheen and give the furniture a silky feel.

Stone



Natural

Natural protection
indoor/outdoor use

You can choose not to have a final protective layer on your furniture. You embrace the natural process of the stone and will celebrate each stain.

Do you have a noticeable stain in your natural stone? Be patient, the stain will fade by itself and eventually disappear, but this takes some time



Liquid & stain protector

Lithofin Protector
*bluestone
indoor/outdoor use*

This agent forms a thin, invisible film that prevents contaminants from penetrating and is easy to wipe off. This means that water, oil and grease have no chance to cause stains. In addition, the surface is easier to maintain after treatment.

Lithofin stain stop
*marble & granite
indoor/outdoor use*

An impregnating agent that protects against stains. The wafer-thin, invisible layer that is formed prevents oil, grease or water from penetrating into the stones and also makes the maintenance of the stones easier.

Steel

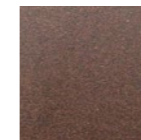


Powdercoat

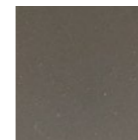
Sturdy and weatherproof baked lacquer coating, available in four colors.



Black



Corrosion rust



Elephant grey



Taupe satiné



Acrylic

Sprayed two-component paint, suitable for indoors. Most common used RAL colours are possible



Antique wax

Polishing wax that provides a protected and neat finish.

Inspiration





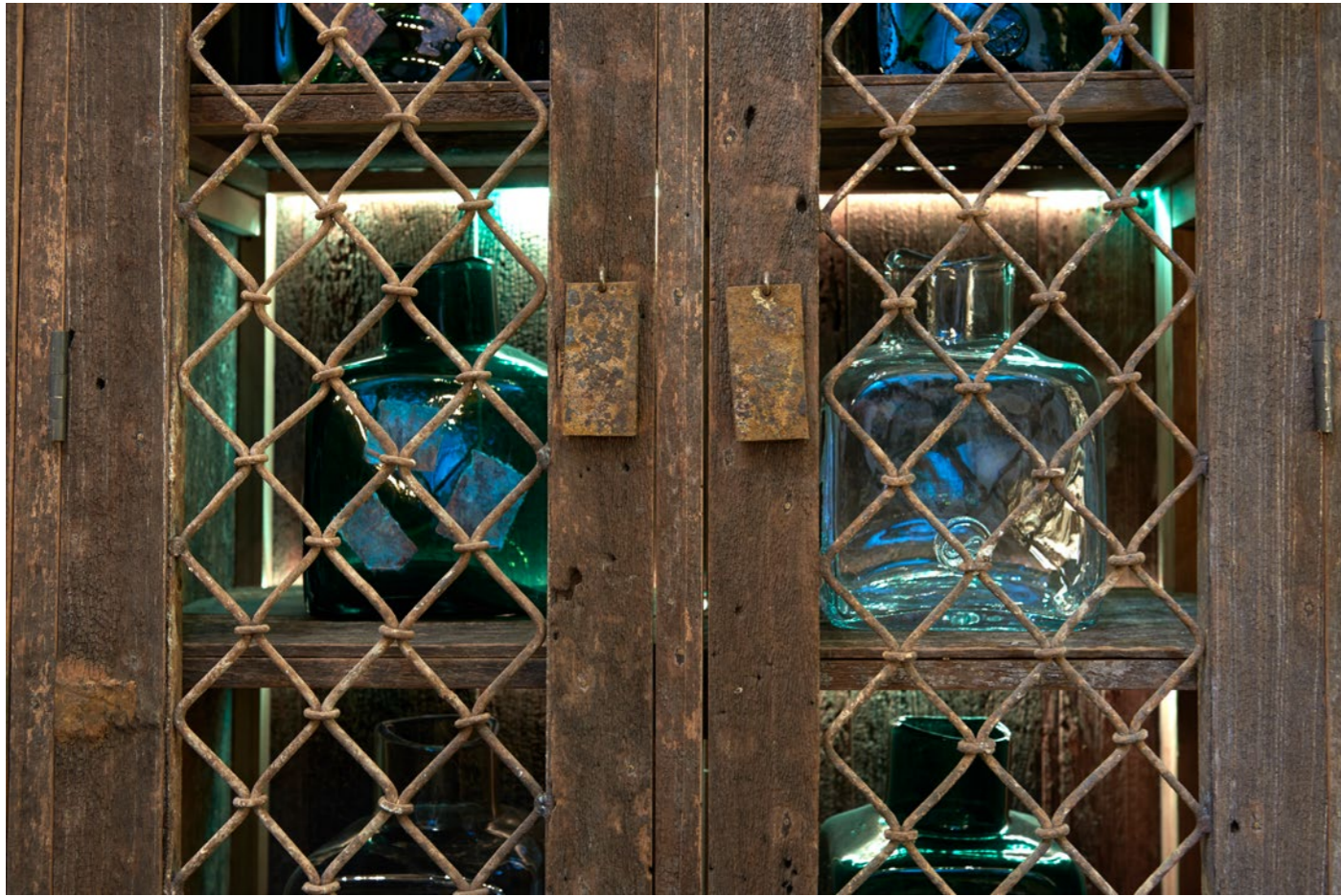


















Circle of life



Origin

After years on the rough seas, a boat is dragged across the beach one last time. It has braved countless dangers, weathered storms, and reunited families. It is on its final journey towards the graveyard of ships, where it will lie to rest until the ends of time... but it doesn't have to be like that. The wood that makes up the boat has stories to tell for ages to come. Reclaiming this wood is a key factor in the Sempre perception, where life keeps on giving throughout time.

Process

When the boat is dismantled, our local carpenters start to clean the wood and lay bare the secrets it has kept. They make sure that all metal is removed and reclaimed from the beams and planks that are being recovered. Nothing goes to waste, each part finds a new use and is celebrated for its beautiful patina.

Destination

After the cleaning process, the reclaimed natural wood is formed into new life. It arrives at your home or business, ready for a new adventure. To bring happiness to families enjoying a nice home-cooked meal at the dining table. Or to bring peace to people relaxing on the sunbeds in the hot summer sun. The boat may no longer exist, but its soul will now live on in these new products.

Tips & tricks

Teak

Light exposure has a big impact on teak. For example, in a dark room, the table will darken, and an oil layer will form on the surface. External outdoor influences, in turn, create a grayed and weathered effect.

When teak is treated, it gets an orange shine. Don't worry; if you prefer a greyish look, you can leave the furniture outside until it has the perfect aged look or speed up the process with brown soap, a sprinkle of bleach, and water. The more bleach you use, the more it clears.

Our advice is to clean and nourish the teak from time to time with a small amount of natural glycerin-based soap. We recommend Teak Protector Spray for indoor use, which covers the table with a thin protective layer. As this wears off over time, especially when the wood is used intensely, you should regularly reapply the treatment. This treatment ensures that the wood's appearance is preserved and is not affected by external factors such as light.

Please note that teak fumé cannot be treated with TPS and should instead be polished or waxed.

Oak

Oak can be treated with a humid cleaning cloth and a bit of decolorant followed by natural glycerin-based soap. Afterward, you can use a sanding sponge to polish the surface.

In addition to regular cleaning with soap and water as described above, we strongly recommend hiring a professional woodworker to clean your outdoor furniture at least once a year. This is particularly important for large projects where the furniture is kept outside all year round and is exposed to intensive use, such as in bars, hotels and restaurants.

Our natural oak furniture (from 2020) receives a water-based treatment as standard so that wiping with a cloth is sufficient to clean the furniture.

Good to know

New products



Scan the code to explore our novelties

Fabrics



Scan the code for more information

Care & Maintenance instructions



Scan the code for more information

Wood



Natural beauty

In order to show their true beauty our natural wood products are not lacquered or varnished. Because the wood is not sealed, it will absorb liquids from leaves, food, drinks, etc., which causes the wood to stain.

If desired, we can apply a protective layer.



Living product

Wood is a living product that moves with time and can shrink and expand under the influence of humidity and temperature changes. Having all the screws and connections checked and tightened will extend the furniture's lifespan so that you can enjoy it for many years to come. The relative air humidity should be controlled and held at a constant 60 – 65% to minimize the risk of cracking.



Marks and stains

Since the wood has been used before, it has inevitable characteristics and markings. We insert patches in the wood to fill in holes and remove materials from use over time, such as nails for safety reasons. Please note that all these materials can cause rust, which might stain the product itself or cause sedimentation on the floor.

The stains, however, will not compromise the quality of the wood itself.



Outdoor use

Our wooden tables are originally designed for indoor use, but we can easily adjust their design for outdoors. In this case, we will alter the table top's construction and leave some room in between the individual boards so that water can run through, and the wood has room to expand. This way, the wood will not warp or crack as easily. We use this outdoor design only for teak tables. If you wish to have an outdoor oak table, we recommend using a stone top with an oak table base.



Tannins

Hardwoods such as teak and oak contain natural colorants such as tannins that are dissolvable in water. As a result, a discoloration from yellow to brown or red may occur when the wood comes in contact with liquid or even water-based paint or is put in a moist environment. These natural tannins can also emerge from the wood and affect any products or surfaces surrounding the wood.



Careful placement

Furniture should remain leveled to avoid contortion and destabilization of the construction. The majority of our tables are shipped upside down to prevent breakage. It is essential to not put any weight on the legs from the sides when flipping the table. Instead, lift the entire table at once and place all legs on the floor simultaneously.



Care & Maintenance instructions



Scan the code for more information

Stone



Careful placement

To avoid breakage, always place your stone table tops perfectly horizontal and level on the designated base. Ensure that there are no small scraps of stone or other materials stuck between the top and base. With point stress, the chances of breakage are likely.



Outdoor use

Belgian bluestone is suitable for both indoors and outdoors. Its low porosity makes the material resistant to frost and pollution. The tops do not need to be covered in winter.

Massengis and Lapia stones can be used outdoors, as well as marble, but it loses its shine outside and acquires a patina thanks to the natural elements.



Marks and scratches

Outside, grease marks on the stones will eventually fade with exposure to the sun and rain. This can take anywhere from several weeks to several months, depending on the grease's nature and amount. For quicker results, you can use water with two spoonfuls of ammonia or a good detergent.

Superficial micro-scratches are normal and will, over time, contribute to give the top a beautiful patina. To nourish the stone and reduce micro-scratches, you may treat the top with natural glycerin-based soap diluted in water. You can clean the stone by nourishing it from time to time with a small amount of natural glycerin-based soap.



Fossils

Our stones are mined from nature, which means that they contain fossils. As a result, white/ greyish marks or veins run through the stone. The quantity and size vary from piece to piece. Fossils are an inherent characteristic of the stone and do not affect its quality.



Stains

We do not seal our bluestone, so its porosity allows liquids from leaves, food, drinks, etc., to enter the stone, resulting in stains. When used indoors, we recommend lithofin, which covers the tabletop with a thin protective layer. As this wears off over time, especially when the top is used intensely, you should regularly reapply the treatment. The coating prevents liquids from permeating the stone upon contact but does not make it 100% impenetrable, so it is best to wipe off any liquid as soon as possible.

Stains are less noticeable on our darker, fumé finishes. These finishes are created by impregnating the stone with a color deepener, which is available for purchase at Sempre. Always make sure to leave enough dry time between the different layers. If stains occur, Sempre can suggest an appropriate treatment.



Color differences

The color of our used stones can vary significantly from one to another. This depends on several factors such as the place of origin, the depth it was mined, etc.

Steel



Uncoated iron

Our iron is uncoated and will oxidize if left outside. Rust may come off. The iron can be coated upon request to prevent oxidation from outdoor use.

Sempre In & Outdoor Living BV

Grensstraat 18

2270 Herenthout (Antwerp)

Belgium

+32 14 28 36 36

info@sempre.be

For further information please visit our website

www.sempre.be

Sempre In & Outdoor Living BV reserves the right to change, at any time and without prior warning, the technical specification of any product illustrated in this catalogue. Any reproduction, representation or modification, in full or partly, is expressly prohibited.

